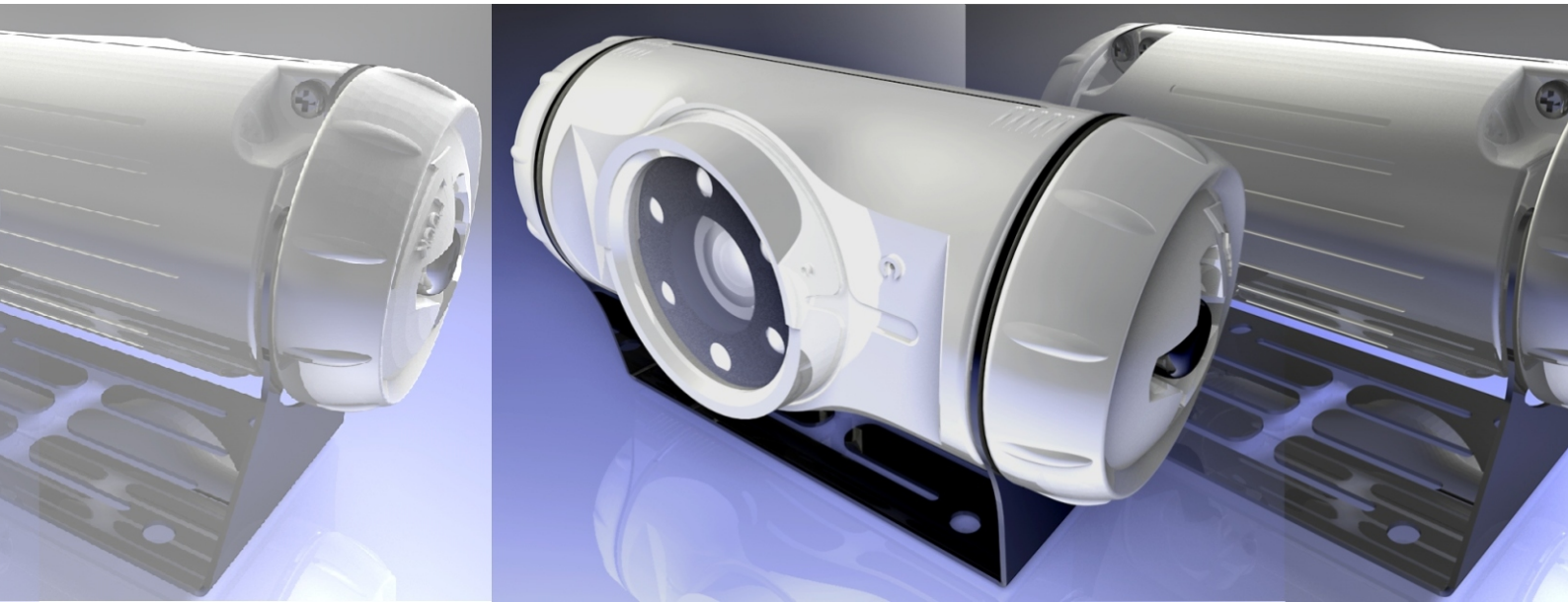


Mobile Recording System

CV-7051 Vehicle Color Camera



Features

- *The CV-7051 is a color camera with a strong and stable structure for use in all types of vehicles.
- *It is equipped with the mirror function, which is indispensable for cameras positioned in the rear of vehicles.
- *It packs the maximum shock-proof endurance necessary to withstand the roughest environments.
- *It can operate in a wide range of temperatures.
- *The camera can be installed in any position and at any angle you choose.
- *Its built-in IR LEDs equip you with night vision.

Specifications



Model	CV-7051/CV-7051M
Image Device	1/4" Interline Transfer Color CCD
Picture Element	NTSC: 512 (H) x 492 (V) PAL: 512 (H) x 582 (V)
Resolution	380 TV Lines (Central Part)
Min. Illumination	2.0 lux / F2.0 (0 lux, IR LED On)
Signal Noise Ratio	45dB (AGC OFF)
Scanning Frequency	NTSC: 15.734KHz (H) x 59.94Hz (V) PAL: 15.625KHz (H) x 50Hz (V)
Synchronization System	Internal
Iris	CCD Iris
Shutter Speeds	1/60 (1/50) to 1/10,000 sec
AGC	Auto (0~26db)
White Balance	Auto (2800K~9000K)
Mirror Function	Yes (CV-7051M only)
IR LED	Auto On/Off
Lens Mount	Board Lens 2.13mm/F2.0
IR Distance	5M
Lens View Angle	Horizontal 98°; Vertical 73°
Video Output	1.0Vp-p 75ohm
Cable Length (6P Din)	6000mm
Power Requirements	DC12V +- 10%
Power Consumption	3W
Operation Temperature	-20°C ~ 65°C
Storage Temperature	-30°C ~ 80°C
Dimension	104 x 50.5 x 42 mm
Certificate	IP66